

# FBX™ DRILL



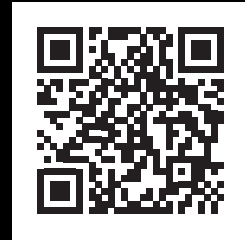
# FBX Drill

The FBX Drill is ideal for pre-machining of high-temperature alloy airframe structural parts. Its four large chip flutes guarantee fast stock removal on large metal plates or forgings. The flat bottom drill point design eliminates radial forces, which makes FBX perfect for applications on machines with lower horsepower. The Bolt Taper Flange (BTF) connection provides maximum tool stiffness and flexibility at the same time. Nearly as rigid as a monoblock tool design but offers multiple machine side connections.

The new FBX design features:

- M4 clamping screws to strengthen insert clamping and provide maximum stability
- Larger flute design for improved insert accessibility and standard wrench compatibility

## Product & Application Data



## Applications

### PRIMARY



Flat Bottom Drilling



Chain Drilling

### SECONDARY



Plunging



Counterboring

## Materials

### PRIMARY



High-Temp Alloys

### SECONDARY



Steels

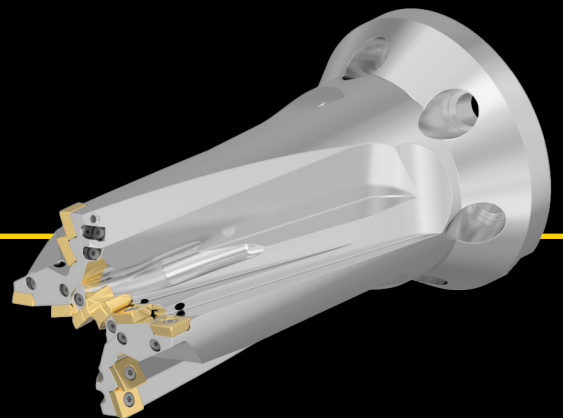


Stainless Steels

## Industries



Aerospace



**WE DON'T CUT CORNERS.  
WE CUT METAL.**

